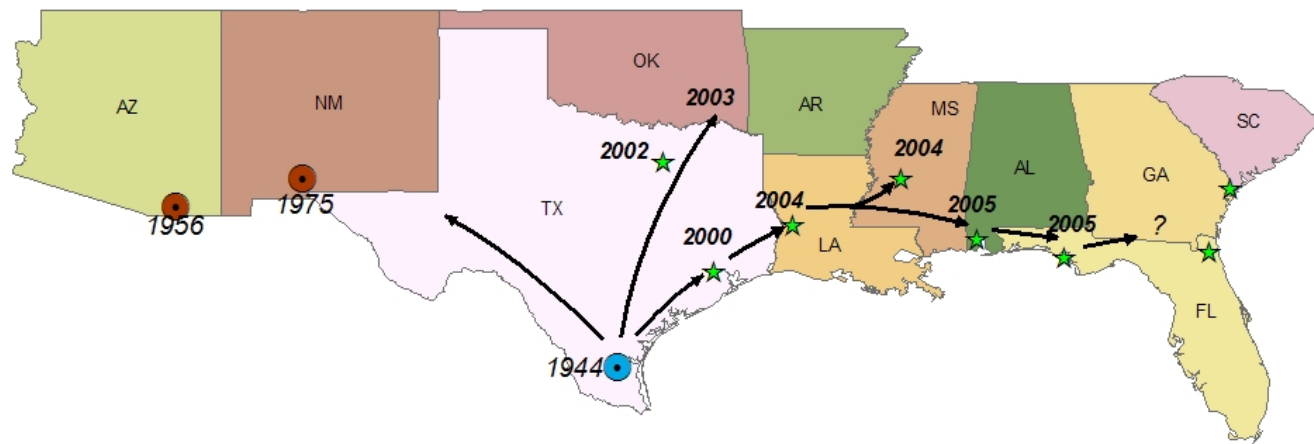


# Expanding Distribution of *Culex coronator*

## Expanding Distribution of *Culex coronator*



Data: Dr. Bruce Harrison  
Map: Marcee Toliver  
9-8-2006



Welcome to

**NCMVCA**

The North Carolina  
Mosquito & Vector Control  
Association

# Distinguishing Characteristics

- **Head setae:**
  - seta 6-C with 3-4 branches
  - seta 5-C with 4-5 branches
  - Antenna seta distal, not at middle
- **Mesothorax:**
  - seta 1-M and 2-M short, equal length
- **Siphon:**
  - length 7-9 times width at base
  - widest at base and gradually tapering to tip
  - usually with crown of spines just before tip
  - 4 pairs of very short 2-branched siphon setae
- **Saddle:**
  - saddle seta short, saddle with dense spicules

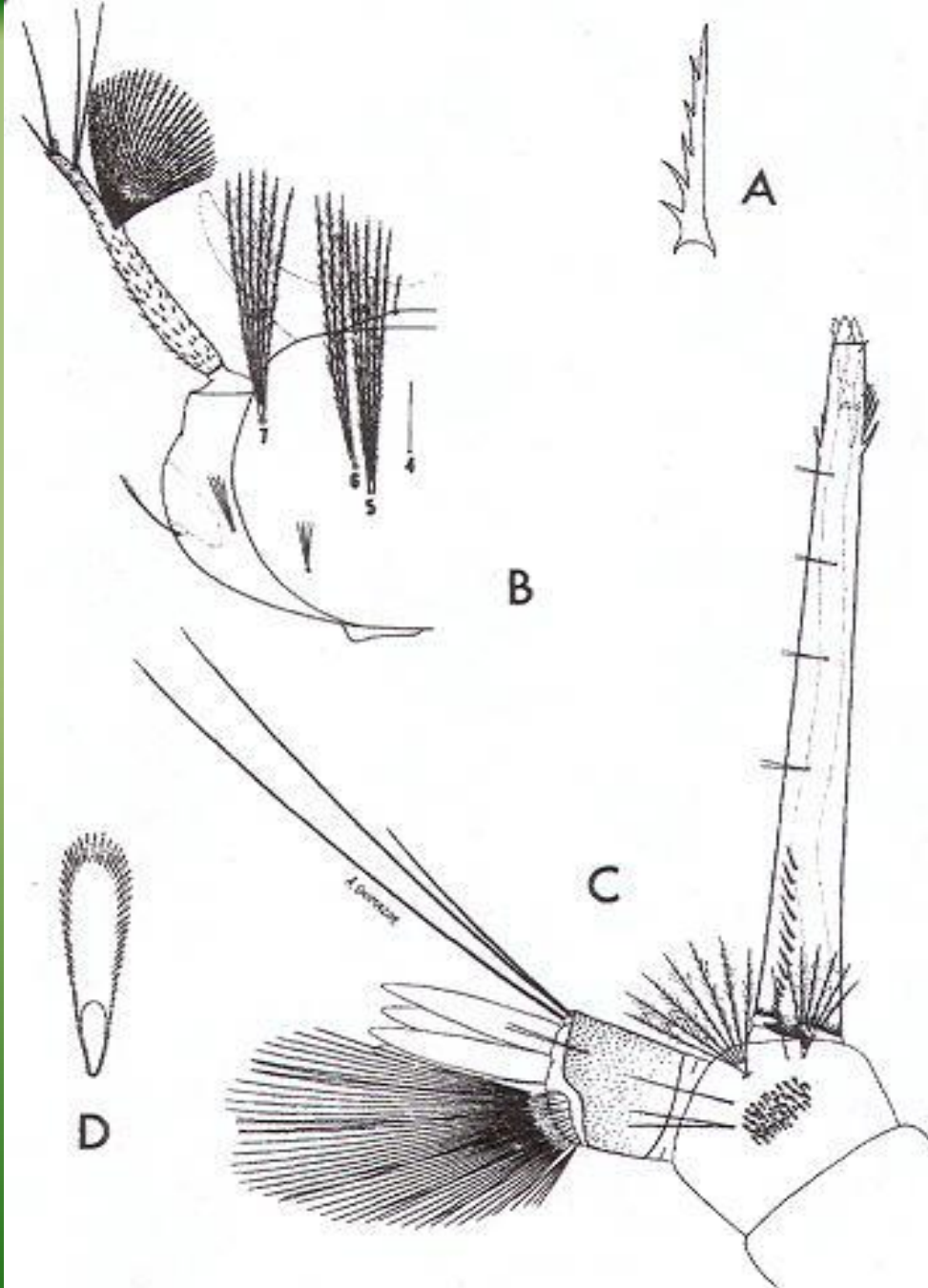


Fig. 234. Larva of *Culex coronator* Dyar and Knab. A, Pecten tooth. B, Head. C, Terminal segments. D, Comb scale.



# Distinguishing Characteristics

- Head:

- proboscis with median patch of white scales on venter (no band)\*\*

- Thorax:

- scutum frequently with 2 white spots like *Cx. restuans*
- postspiracular white scales often present\*\*

- Abdomen:

- segments with broad white basal bands

- Legs:

- femur and tibia with small white bands at the apex
- tarsi with narrow white bands
- hindtarsomeres with white bands across the joints\*\*
- hindtarsomere 5 with basal and apical white bands\*\*

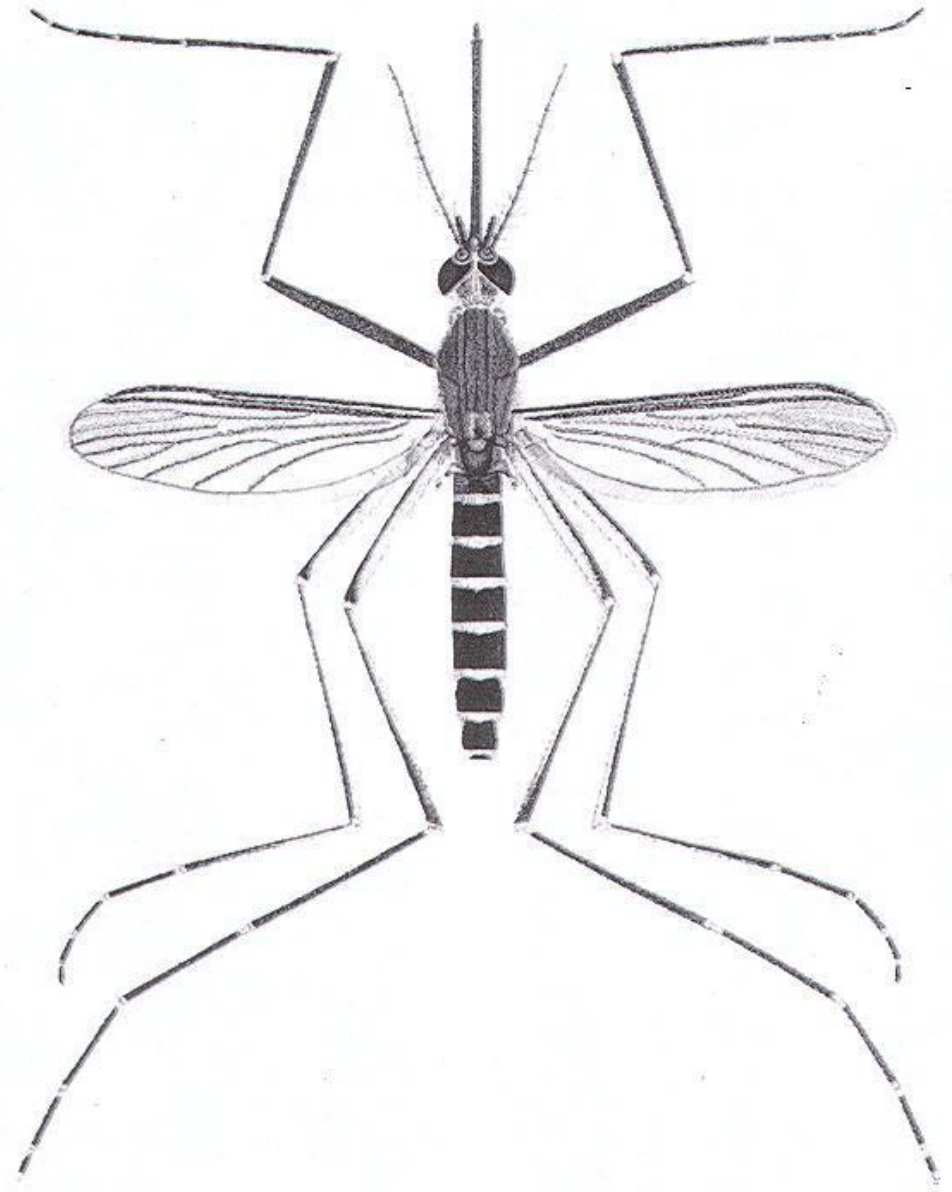


Plate 103. *Culex coronator* Dyar and Knab, female.



# Associated Larvae Found with *Cx. coronator* in Ditches and Ground Water in Mississippi

- *Aedes vexans*
- *Anopheles punctipennis*
- *Culex nigripalpus*
- *Culex restuans*
- *Culex salinarius*
- *Culex territans*

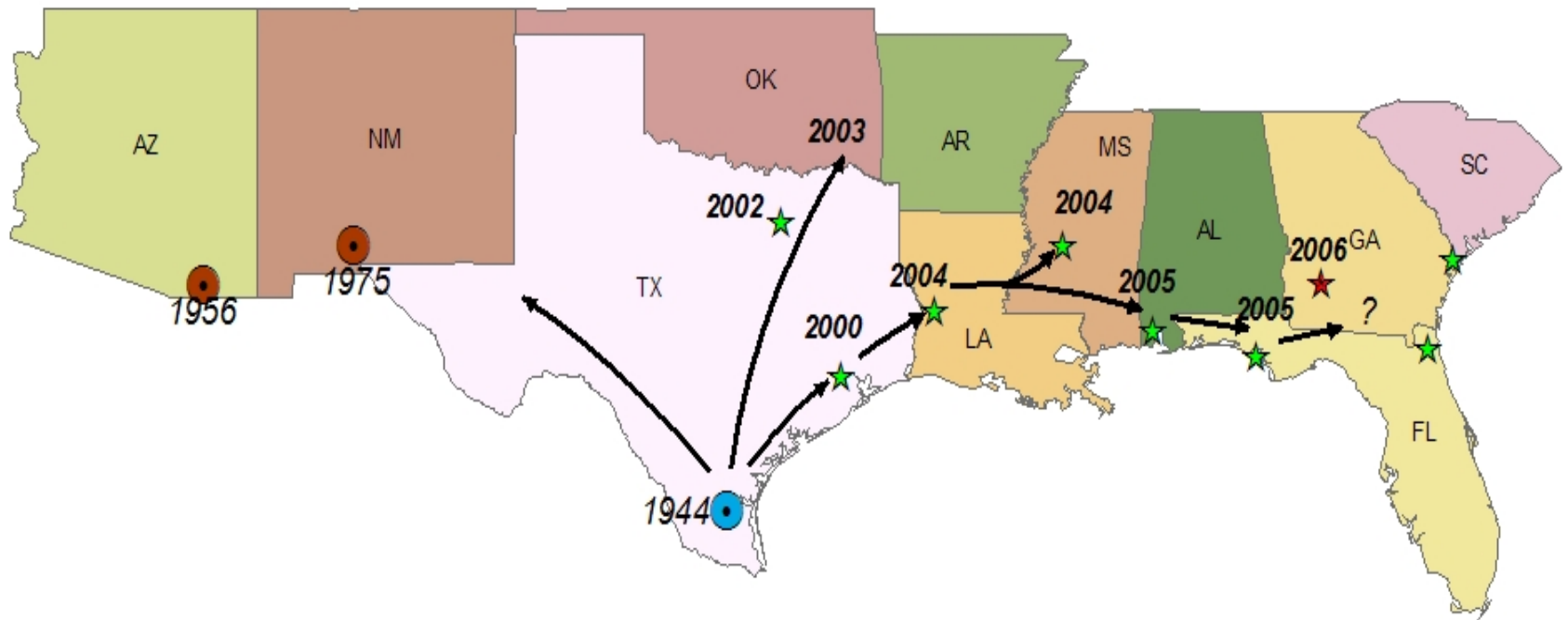


Welcome to

NCMVCA

The North Carolina  
Mosquito & Vector Control  
Association

# Expanding Distribution of *Culex coronator*



Welcome to  
**NCMVCA**

The North Carolina  
Mosquito & Vector Control  
Association